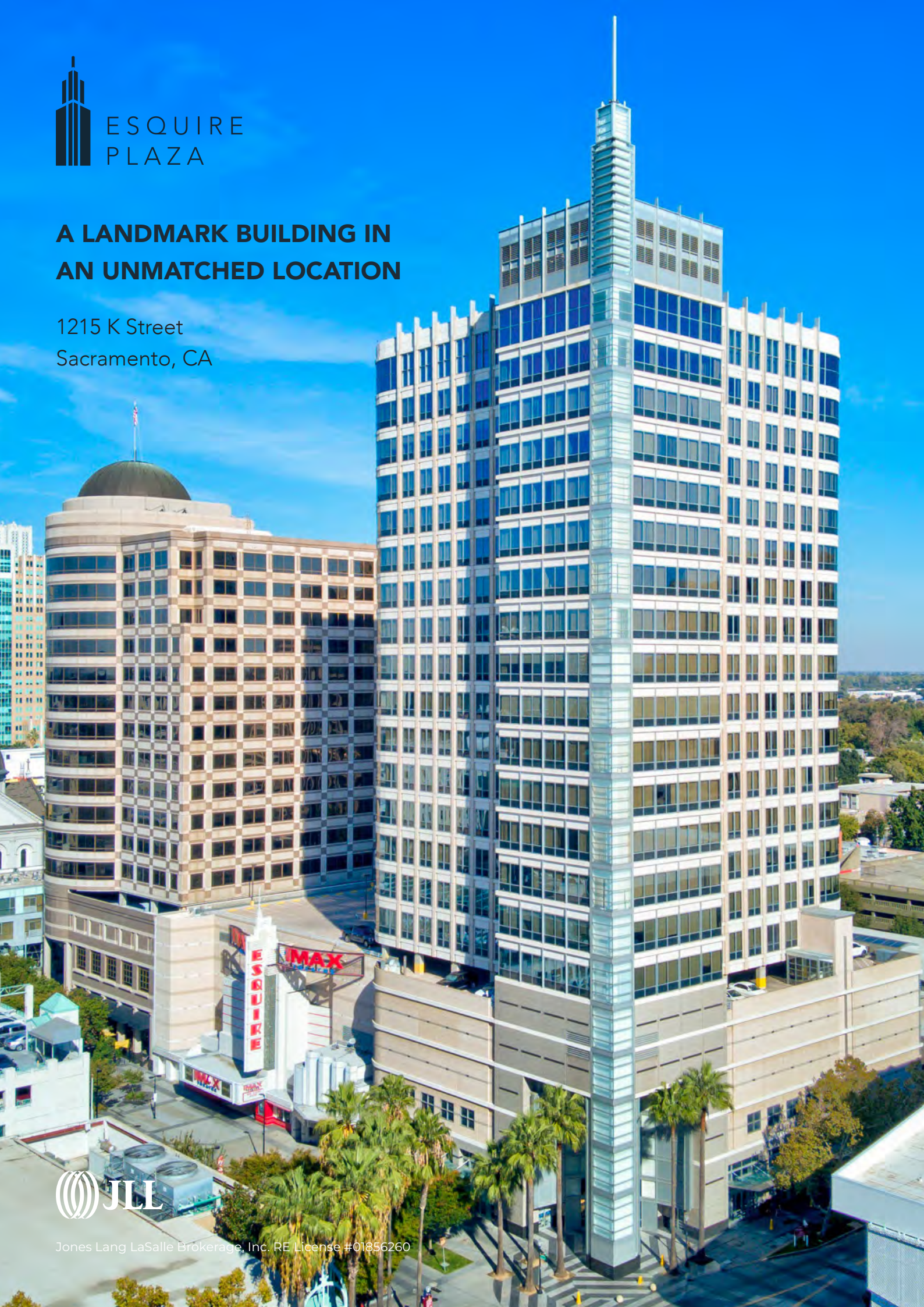




ESQUIRE
PLAZA

**A LANDMARK BUILDING IN
AN UNMATCHED LOCATION**

1215 K Street
Sacramento, CA

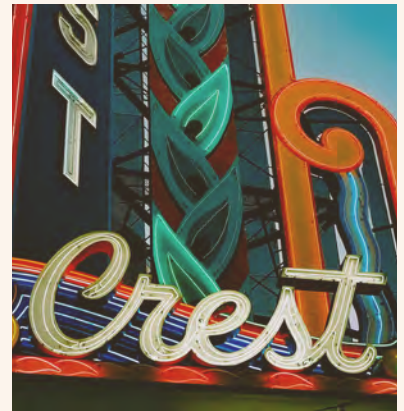


Jones Lang LaSalle Brokerage, Inc. RE License #01856260

SACRAMENTO'S PREMIER ADDRESS FOR BUSINESS

New Ground Floor Restaurant Opening Winter 2025!

-  Excellent location in Sacramento's Governmental Affairs District
-  Two blocks from the CA State Capitol
-  Grace Coffee Roasters located in the building lobby
-  Adjacent to the Sheraton Grand and Hyatt Regency hotels
-  Steps from the Sacramento Convention Center & Community Center Theater
-  Award-winning architecture - one of the most visible buildings of Sacramento's skyline
-  Several restaurants, bars and entertainment venues within walking distance
-  On-site parking



THE CENTER OF CULTURE

Sacramento's downtown SAFE Credit Union **Convention Center** reopened in 2021 after a comprehensive renovation and expansion. The Convention Center provides 240,000 SF of meeting and event space in addition to a new outdoor plaza to allow visitors to take full advantage of Sacramento's ideal climate.



CONVENTION CENTER



COMMUNITY THEATER

The Safe Credit Union **Performing Arts Center**. This 2,442 seat theater is Sacramento's premier performing arts venue, home to Broadway Musicals, Ballet, Opera and Orchestra.

In the Governmental Affairs District, Esquire Plaza is at the center of it all. Visitors and clients will only need to walk a few blocks to reach the Residence Inn by Marriott, Sheraton Grand, Hyatt Regency, and Citizen Hotel.



SEVERAL HOTELS NEARBY



CALIFORNIA STATE CAPITOL

The California State Capitol is a short walk from Esquire Plaza. The architecture of the California State Capitol was modelled after the U.S. Capitol building in Washington, D.C. and was originally built between 1860 and 1874.

AVAILABILITIES

Suite 960 ±1,481 RSF

Suite 1250 ±4,303 RSF

Suite 1840 ±2,333 RSF

Suite 1930 ±5,420 RSF

Suite 1110 ±2,339 RSF

Suite 1050 ±5,524 RSF

Suite 900 ±2,972 RSF

Suite 1700 ±12,007 RSF

Suite 940 ±3,677 RSF

Suite 2100 ±14,738 RSF



NEARBY AMENITIES



ENTERTAINMENT

1. Century DOCO and XD
2. Crest Theatre
3. Esquire IMAX Theatre
4. Community Center Theater

RESTAURANTS

1. Echo & Rig
2. Sauced BBQ & Spirits
3. Tiger
4. Ruhstaller BSMT
5. Solomon's Deli
6. Frank Fat's
7. Grange
8. Crest Cafe
9. Nash & Proper
10. Ella Dining Room & Bar
11. Brasserie Capitale

CAFES

1. Estelle's Cafe
2. Starbuck's Reserve
3. Temple Coffee Roasters
4. Starbucks
5. Chicory Cafe
6. Starbucks
12. Mayahuel
13. Capitol Garage
14. Public House

GYM

1. 24 Hour Fitness
2. The Capital Athletic Club
3. California Family Fitness

HOTELS

1. Kimpton Sawyer Hotel
2. The Citizen Hotel
3. Hyatt Regency Sacramento
4. Sheraton Grand
5. Residence Inn by Marriott

PARKING

1. Capitol Garage
2. City Hall Garage
3. Hyatt Garage
4. Sheraton Garage
5. Memorial Garage
6. 1500 K St Structure



ESQUIRE
PLAZA

1215 K Street,
Downtown Sacramento, CA



LEASING INFORMATION

Greg Levi

+ 1 916 491 4310

RE License # 00973235

greg.levi@jll.com

Alexis Garrett

+ 1 916 491 4316

RE License # 01836361

alexis.garrett@jll.com

Although information has been obtained from sources deemed reliable, neither Owner nor JLL makes any guarantees, warranties or representations, express or implied, as to the completeness or accuracy as to the information contained herein. Any projections, opinions, assumptions or estimates used are for example only. There may be differences between projected and actual results, and those differences may be material. The Property may be withdrawn without notice. Neither Owner nor JLL accepts any liability for any loss or damage suffered by any party resulting from reliance on this information. If the recipient of this information has signed a confidentiality agreement regarding this matter, this information is subject to the terms of that agreement.

©2025 Jones Lang LaSalle IP, Inc. All rights reserved.

